

Jesus Paid It All

Words by
Elvina M. Hall
and Alex Nifong

Music by
John Thomas Grape
and Alex Nifong

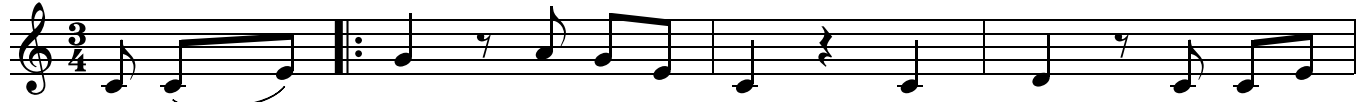
♩=80

VERSE 1 & 2

Cmaj⁷/E

Cmaj⁷

G



1. And I _____ hear the Sav - ior say, "Thy strength in - deed is
(2. Lord) _ now in - deed I find Thy pow'r and Thine a -

4 Cmaj⁷

Am⁷

F²

Cmaj⁷

G



small. Child of weak - ness, watch and pray, find in Me thine all in
- lone, can _ change the lep - er's spots, and _ melt the heart of

CHORUS 1

8 C

C

Am⁷

C

G



all." 'Cause Je - sus paid it all, all _ to Him I owe.
stone.

INTERLUDE 1

13 C

F²

C

G

Cmaj⁷

Cmaj⁷/E



Sin had left a crim-son stain, He washed _ it white as snow. (2nd x: It's washed a - way, .

INSTRUMENTAL

17 F²

Cmaj⁷/E

Dm⁷

Cmaj⁷/E

F²

Cmaj⁷/E

Cmaj⁷

Cmaj⁷/E



_ all my sin and all my shame.) _

CCLI Song # 4689508

© 2006 Pay Me Please Publishing | sixsteps Music | worshiptogether.com songs
For use solely with the SongSelect® Terms of Use. All rights reserved. www.ccli.com
CCLI License # 21008556

22 Dm⁷ Cmaj⁷/E 1. F² Cmaj⁷/E 2. F² Cmaj⁷/E VERSE 3 Cmaj⁷

2. Lord, _ 3. And _ when be-fore the throne I

27 G Cmaj⁷ Am⁷ F² Cmaj⁷ G

stand in Him com - plete, Je - sus died my soul to save my _ lips shall still re -

CHORUS 1

32 C C Am⁷ C G C

-peat. Je - sus paid it all, all _ to Him I owe. Sin had left a

INTERLUDE 2

38 F² C G C C F²

crim-son stain, He washed _ it white as snow. Sin had left a crim-son stain, He

43 C G C G C G

washed _ it white as snow. He washed _ it white as snow. He washed _ it white as

CHORUS 2a

48 C^{sus} C

snow. Oh, praise the One Who

CHORUS 2b

53 C^{sus} C C^{sus} Cmaj⁷ Cmaj⁷/E F² Cmaj⁷/E

paid my debt, and raised this life up from the dead. Oh, praise the One Who paid my debt, and

58 Dm⁷ Cmaj⁷/E

| | | |
|---|----------------------|-------------------|
| 1. F ² repeat as desired | 2. F ² | CHORUS 2c N.C. |
|---|----------------------|-------------------|

raised this life up from the dead. Oh, from the dead. Oh, praise the One Who

62

paid my debt, and raised this life up from the dead, Je - sus.